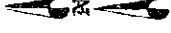
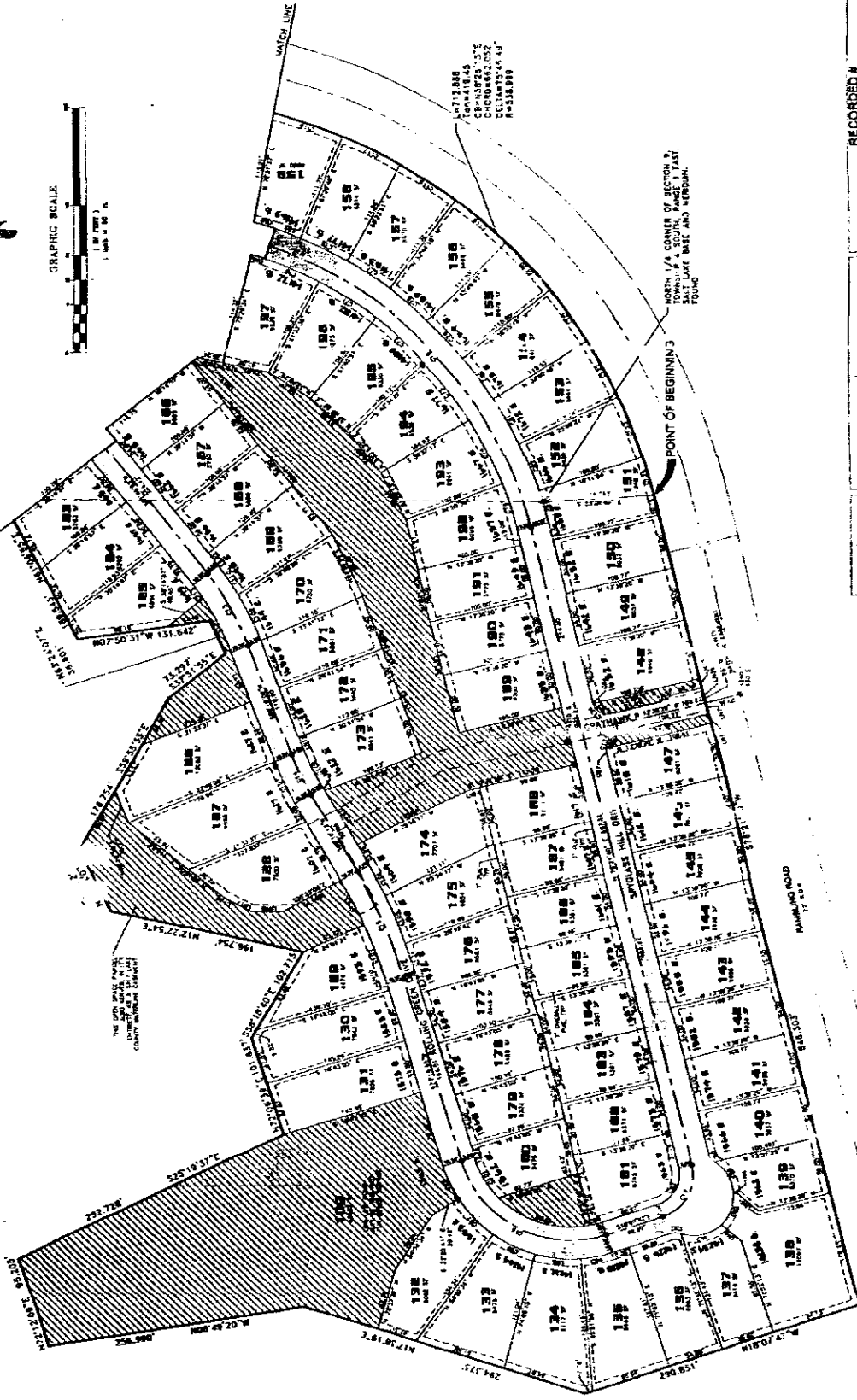
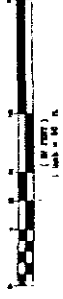


VILLAGE OF WILLOW

FINAL PLAT
SHEET 2 OF 3



GRAPHIC SCALE
1" = 200'



APPROXIMATE
CORNER OF SECTION 2
TOWNSHIP 4 SOUTH, RANGE 1 EAST,
SALT LAKE BASE AND MERIDIAN.
FOUND

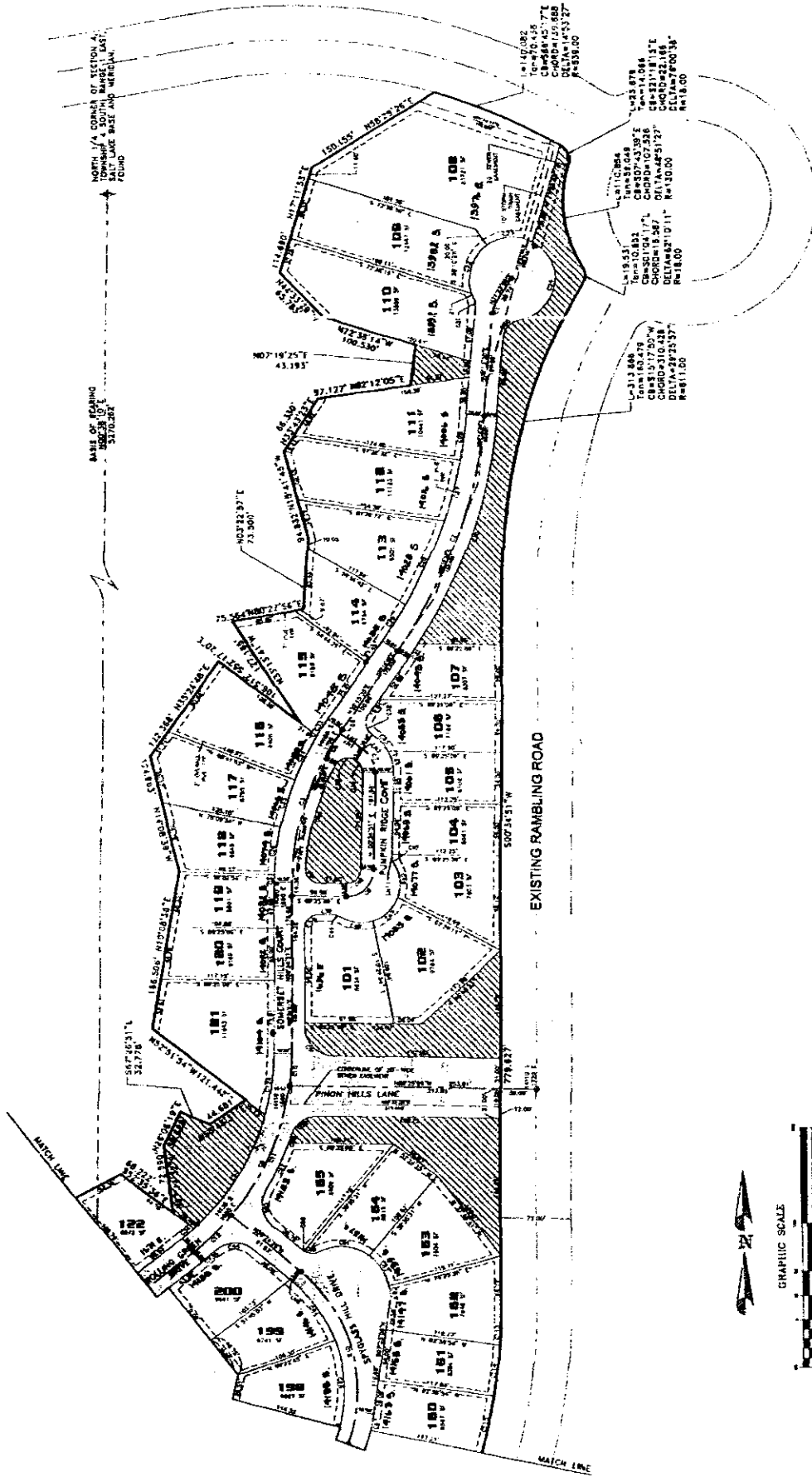
RECORDED #
STATE OF UTAH COUNTY OF SALT LAKE RECORDS AND PLAT AT THE
OFFICE OF THE CITY CLERK
SALT LAKE CITY, UTAH



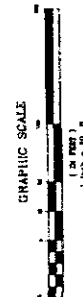
Handwritten signature
2008-2774

VILLAGE ON THE GREEN

FINAL PLAT
SHEET 3 OF 3



RECORDED
STATE OF ILLINOIS, COUNTY OF JOLIET, LAKE RECORDS AND MAPS AT THE
OFFICE OF CITY CLERK
DATE RECORDED: NOV 17 1988



1" = 20' ±

M. J. ...